



HAPICAFE

Introduction Deck

HAPI CAFE



ABOUT US

To transform the way people eat, work and live, Hapi Café combines healthy food, fitness, business activities and leisure all in one location. We strive to create a conducive environment where everyone can gather to enjoy a healthy meal, work, keep fit and plan for the next travel destination.

**\$10,000 FRANCHISE REFERRAL
FEE FOR HWH MEMBERS**

ARTIST'S IMPRESSION

VISION & MISSION

OUR VISION

To inspire and nurture the world to choose a diet that is healthy and brings about happiness.

OUR MISSION

To accelerate the advent of sustainable healthy living around the world.



HAPI CAFE – FOOD | WORK | FITNESS | DISCOVER

HAPI CAFE

NEW UNIQUE EXPERIENCE

HAPPY EXPERIENCE FOR MIND & BODY



FOOD

FUNC(tional) Snacks, Coffee,
Fermented Drinks, Teas, Juices,
Smoothies, Wraps & Bowls



WORK

Not just a co-workspace, but a
relaxing work environment and a
community of friends and potential
business partners & clients.



FITNESS

Fitness room with giant video wall.
Life size video from top teachers for
every fitness goal and every popular
workout every hour!

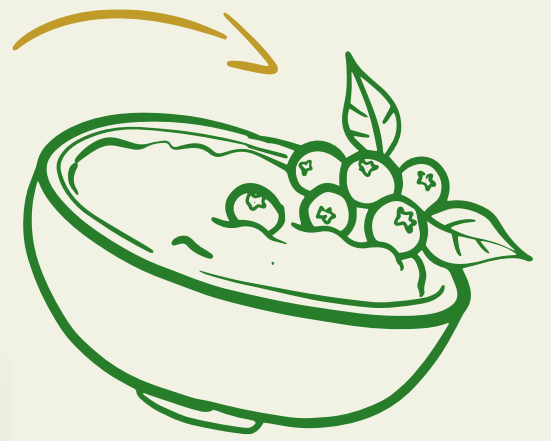


TRAVEL

Watch free travel movies of the most
beautiful places around the world,
produced by TripFlic on video wall.
Travel the world for the price of a
coffee with VR.



The central logo for HAPICAFE. It features a stylized brown icon of a cup with a swirl of steam above it. Below the icon, the word "HAPICAFE" is written in a brown, serif font, followed by "FOOD & BEVERAGE" in a smaller, brown, sans-serif font. The entire logo is centered within a white rectangular box with a thin brown border.





Unhealthy diet—high in trans fats, sugar and processed and refined foods—**increases risk for depression**, especially in children and teens because it deprives the brain of the nutrients it needs, and breeds bad bacteria in the gut, which impacts our mental and physical health

Gut is the driver of health, including mental health, so keeping fiber intake high through the consumption of plant foods is very important. Research suggests a Mediterranean-style diet made up of fruits, vegetables, extra-virgin olive oil, yogurt and cheese, nuts, whole grains, seafood and lean red meat, and eliminate fried and processed foods. The diet provides the nutrition our brain needs and supports good bacteria in the gut.

Healthy Food Makes You Happy: Research Shows A Healthy Diet Improves Your Mental Health

<https://www.forbes.com/sites/francesbridges/2019/01/26/food-makes-you-happy-a-healthy-diet-improves-mental-health/?sh=36660b2426f8>



HEALTHY
KETO | VEGAN | LOW G.I.

“LET THY FOOD BE THY MEDICINE
MEDICINE BE THY FOOD”

HIPPOCRATES, FOUNDER OF MEDICINE
400 B.C.

HAPI CAFE

BEVERAGES



FRUIT JUICE



SMOOTHIE



FUNCTIONAL COFFEE



FUNCTIONAL TEA



THE HAPPY CO. BEVERAGE PRODUCTS



FITFLIC'S MEAL PREP BOX

FitFlic's Meal Prep-Box takes away all the difficult and time-consuming calorie and macro calculation and all the time required to prepare meals. The client only has to either pick up and or receives delivery and eat!

FITNESS IS
20% EXERCISE &
80% NUTRITION

Making Fitness Nutrition
Easy & Effective

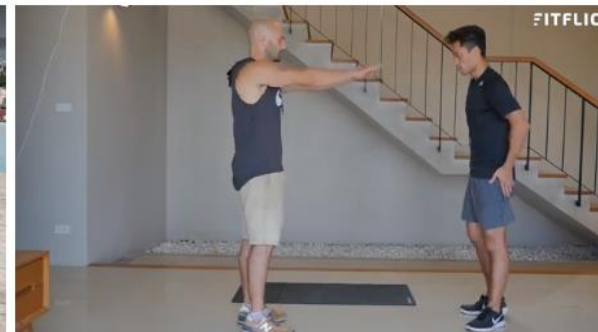
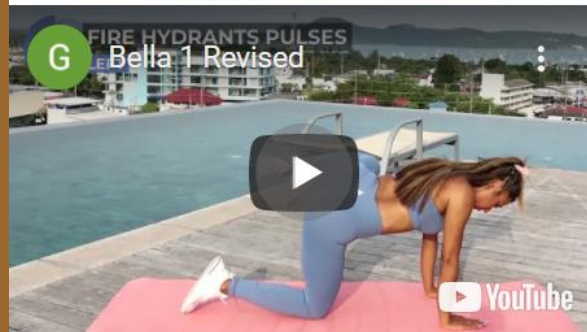
FitFlic generates millions of views from fitness fans on YouTube

Hapi Cafe gets millions of customers from FitFlic

Then FitFlic offers \$600 fitness programs that offers video training and customized FitFlic Meal Prep Box including meals, snacks & juices for 4 weeks.

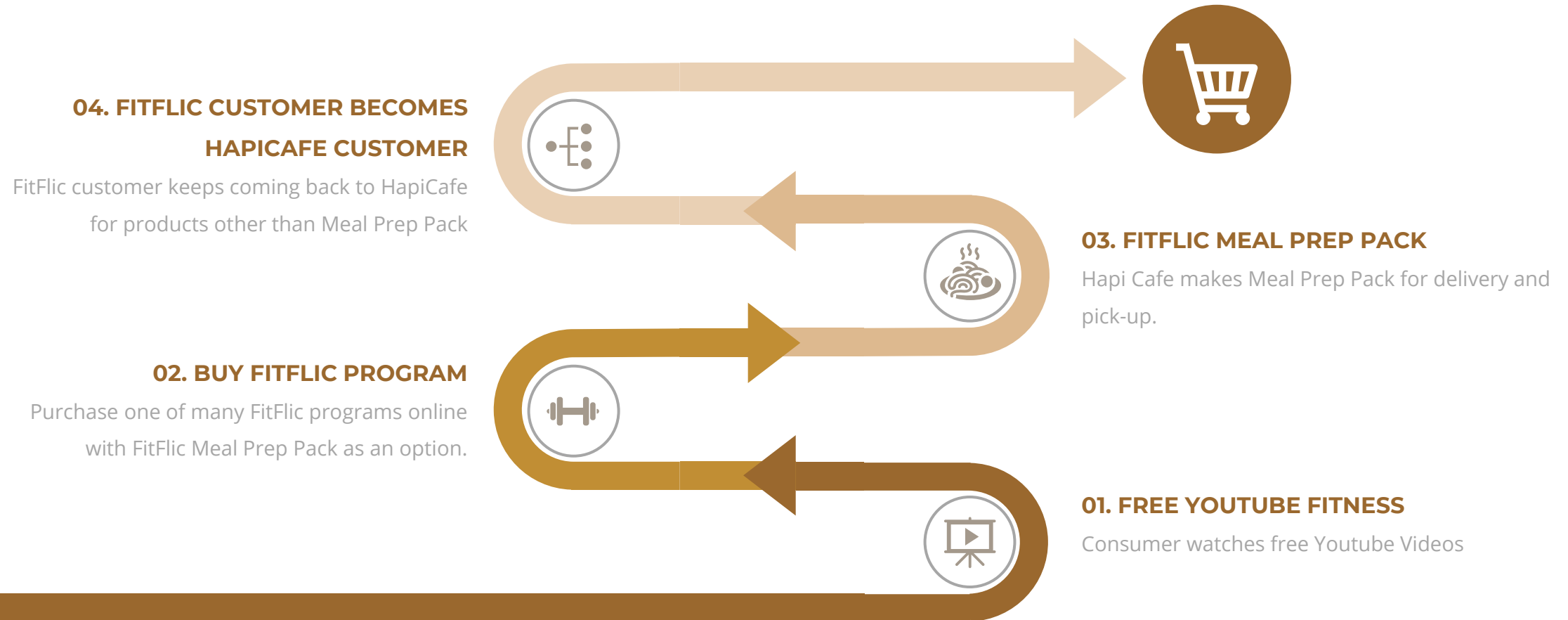
HapiCafe makes FitFlic Meal Prep Box available for delivery and pick up by FitFlic customers, who end up buying many more products from HapiCafe.

FEATURING FITFLIC'S INFLUENCERS PRODUCTION



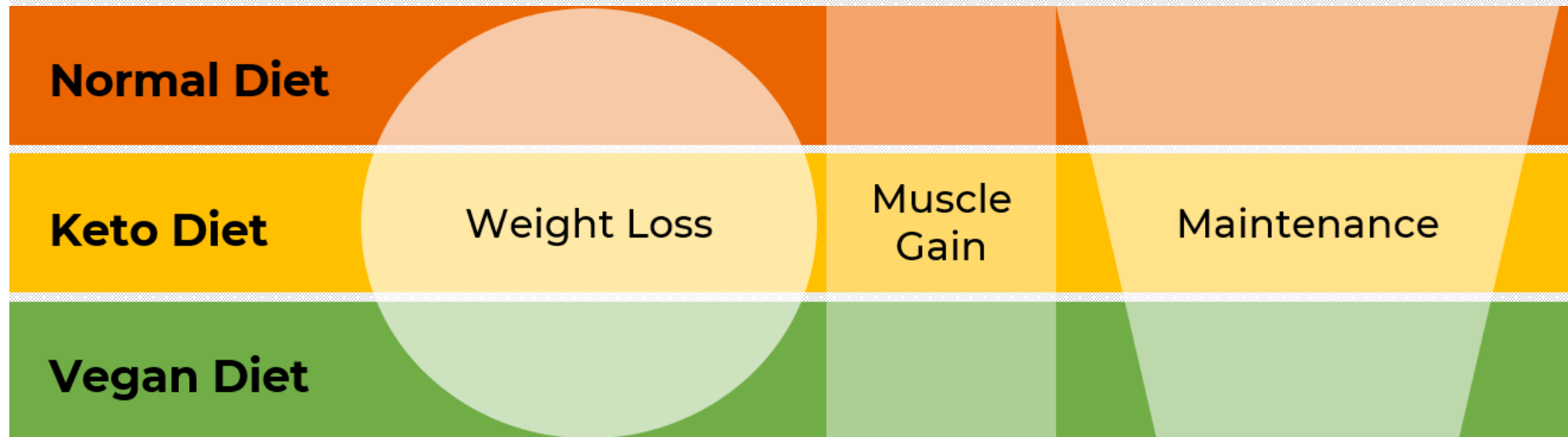
FITFLIC & HAPI CAFE

CONSUMER EXPERIENCE



MEAL PREP BOXES FOR 3 POPULAR CONSUMER GOALS

Complete, Customized, Delicious Meal Preps for 4 Weeks.
Delivery or Pick Up Each Day.



Calories = $12 \times \text{Bodyweight}(\text{lb})$
Carbs - 10%
Protein - 50%
Fat - 40%

Calories = $20 \times \text{Bodyweight}(\text{lb})$
Carbs - 60%
Protein - 25%
Fat - 15%

Calories = $15 \times \text{Bodyweight}(\text{lb})$
Carbs - 40%
Protein - 25%
Fat - 25%



HAPI TRAVEL
DESTINATIONS

Individual & Group Travel

- WeBeauty Trip
- Wealth Training Trip
- Career Training Trip
- Leadership Training Trip
- Company Trip
- Business Trip
- HAPI Vacation Trip
- Special Event Trip
- Medical Trip
- Free & Easy Trip
- Concert Trip
- Volunteering Program Trip
- Pre-Wedding Shoot Trip
- Staycation



PREVIEW YOUR TRIP

Complete Travel Experience

TripFlic provides a New Unique Travel Experience
by Virtual Reality



HAPI **TRAVEL**
DESTINATIONS



**PLAN & BOOK YOUR TRIP
WITH HAPI TRAVEL ADVISORS
STATIONED AT HAPI CAFE**

From Digital to Physical

Using Virtual Reality to plan your trip with Hapi Travel. Get a preview of the attractions, hotel rooms, locations virtually while planning your trip with our **Travel Advisors** stationed at Hapi Cafe.

We will have 100 Hapi Cafe in major cities

**WE WILL HAVE
100 HAPI CAFE IN MAJOR CITIES**





INSURE YOUR TRIP

Travel Insurance

Go on a trip with peace of mind.





HAPICAFE
CO-WORKSPACE

Co-Workspace

Co-Workspace makes work as productive and enjoyable, while building a community. More networking opportunity. Connecting with other individuals.



Space for WORK & NETWORK



MEETING ROOM

Fully-equipped **meeting rooms** are available for members to rent for group discussion, teleconference, training and presentation. Hourly, half-day and full-day rental available.



KOREA OFFICE

Spacious Working Space
with Hapi Café



COFFEE & DESSERT

ELEPRENEURS
elevAcity
Life Elevated

HWHWORLD
HEALTH WEALTH HAPPINESS

DOOR FRONT

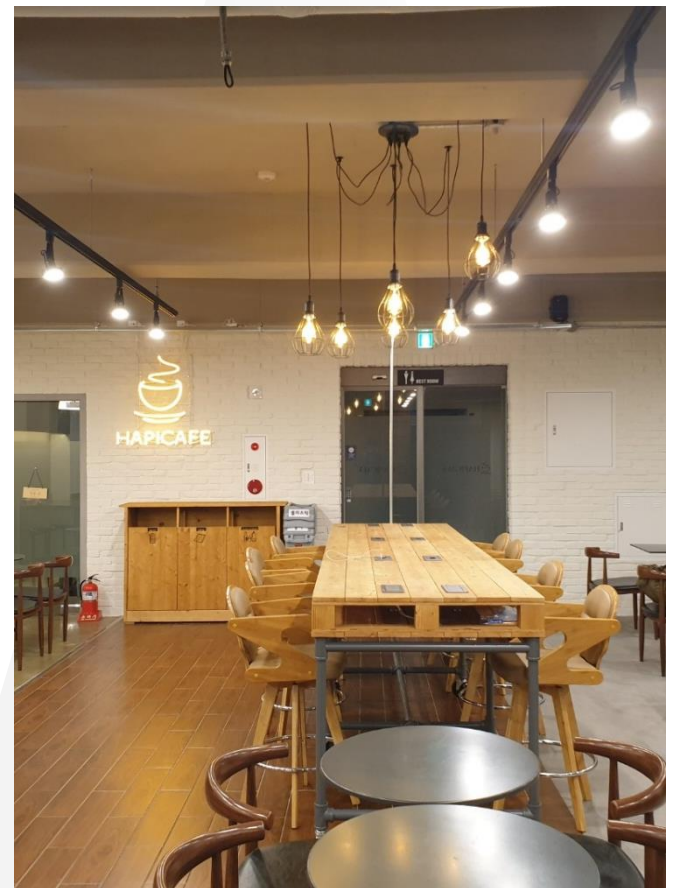
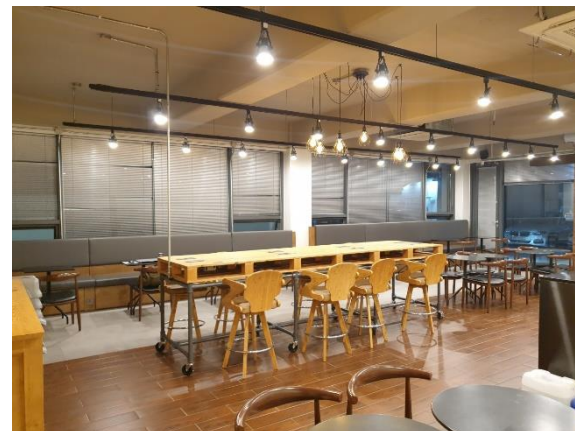


Hapi Cafe in Korea



Hapi Cafe in Korea

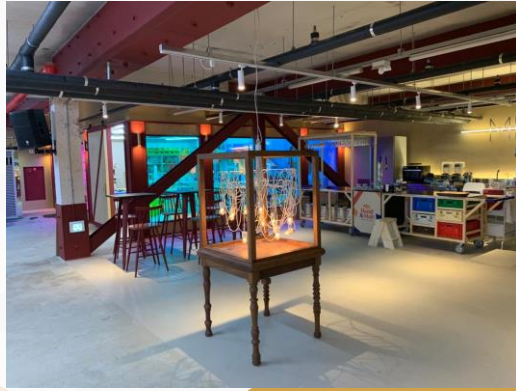
Our store in Korea will be opening soon to support the HWH Gig Economy.



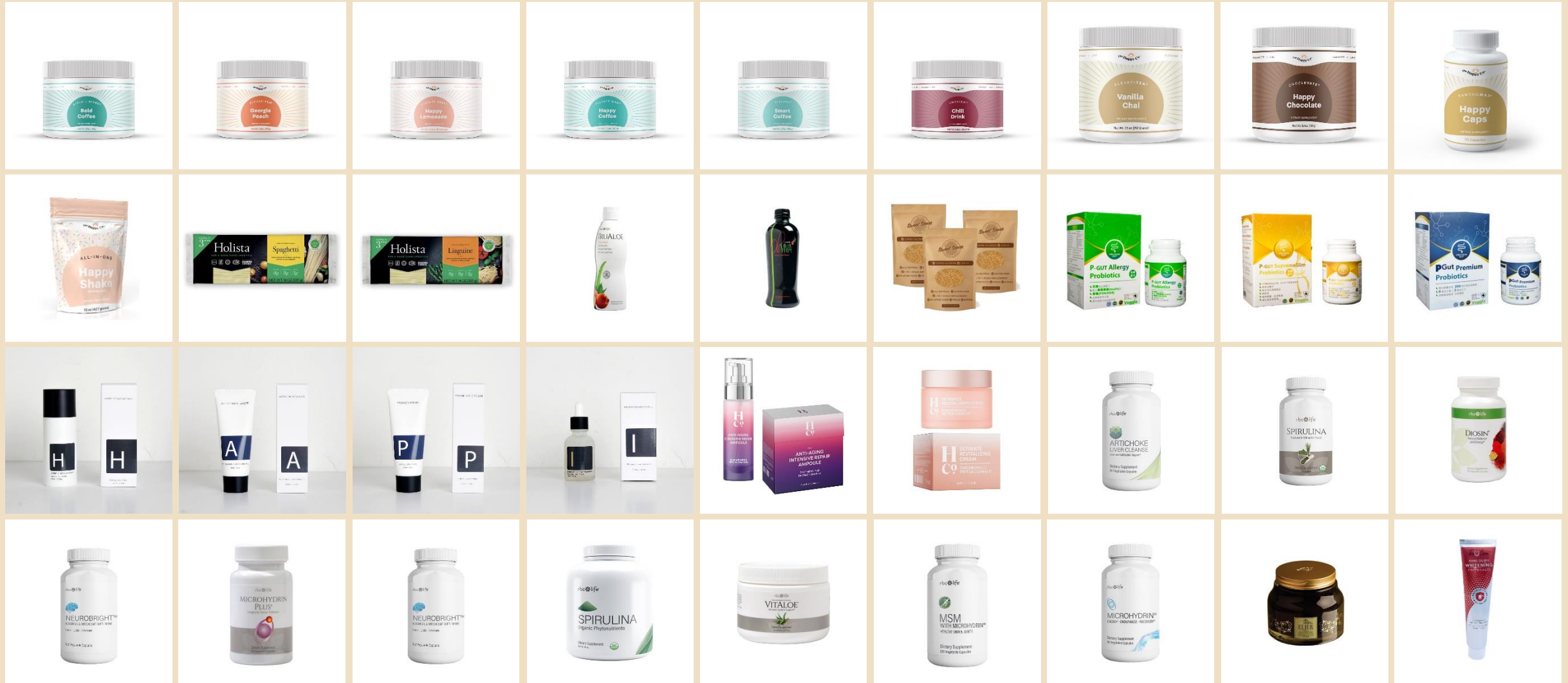
Members Meeting Area

Seongsu | Seoul | South Korea

HAPI CAFE



PRODUCTS AVAILABLE AT HAPI CAFE



MEMBERS' EXCLUSIVE PRIVILEGE



ALSET MEMBERSHIP

ALSET MEMBERS' PRIVILEGE

Shareholders of Alset EHome International (NASDAQ: AEI) & Alset International (SGX: 40V) with share holdings value of over USD\$1,000, Alset EHome Buyers and Tenants will get to enjoy a **Lifetime^ FREE Coffee** at Hapi Café in all our global stores!



HWH FOUNDER MEMBERSHIP

HWH FOUNDER MEMBERS' PRIVILEGE

HWH Founder Members get to enjoy a **Lifetime^ FREE Coffee** at Hapi Café in all our global stores!



HAPI MEMBERSHIP

HAPI MEMBERS' PRIVILEGE

Members of The Happy Co. get to enjoy a **Lifetime^ FREE Coffee** at Hapi Café in all our global stores!

^Terms and Conditions Apply

FRANCHISE

Converting Existing Café

Existing café owners that have been adversely impacted by the pandemic, fret not! Let us help you out. We'll provide you with resources and guidance to revamp your existing café into Hapi Café and what's more, you'll even get to integrate some of your existing menu items in it.

New Franchisees

Aspiring entrepreneurs that are exploring for a new business opportunity, look no further. Join us as we tackle real-world issues revolving around unhealthy diets by fostering a sustainable healthy living lifestyle. Together we can transform the way people eat, work and play, one café at a time.



WE ARE EXPANDING

AmericanPacific
Bancorp

FINANCING

American Pacific Bancorp provides up to 70% Finance Loan for Operation at the prevailing market interest rate.

Subjected to local authorities' regulations.

\$10,000 FRANCHISE REFERRAL FEE FOR HWH MEMBERS



THANK YOU

HAPI CAFE CONCEPT PRESENTATION